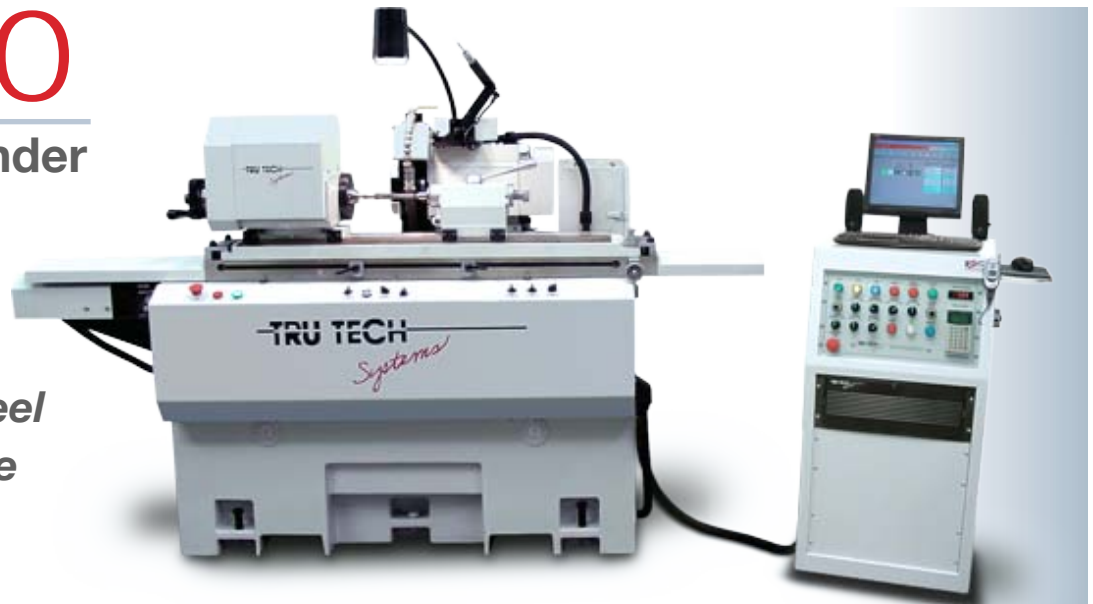


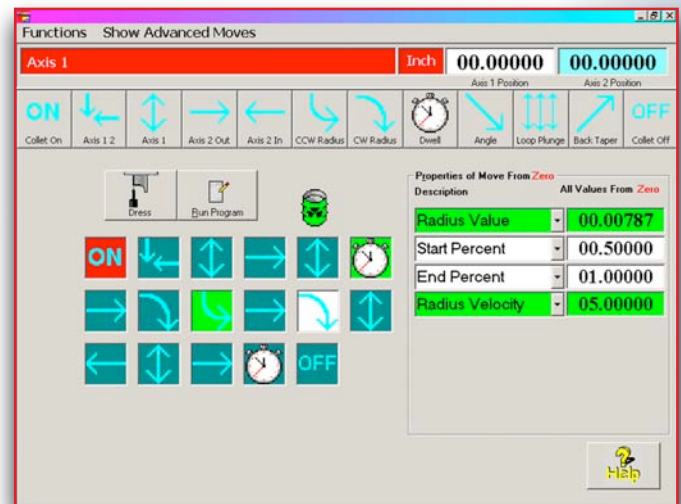
TT-820

Precision OD Grinder

- Quick Set-Up
- Precision Profiles with Standard 1A1 Wheel
- Easy Pick-N-Place Programming



Optional Telescoping Splash Doors



Intuitive Pick-N-Place™ software makes programming each part a quick, simple task. Simply drag move icons into place, edit their values and start grinding.



EASY TO PROGRAM PRECISION O.D. GRINDING

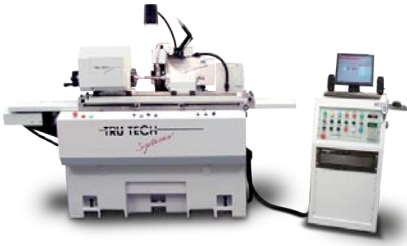
TRU TECH continues the precision round grinding industrial revolution with the TT-820 Precision OD Grinder.

Equipped with the TRU TECH Pick-N-Place™ software, shapes and profiles are programmed in minutes, optimizing your productivity and dramatically increasing your grinding capabilities.

Built-in training and maintenance modules dramatically reduce cost of ownership.

Available options include precision probing, ID spindle attachment, telescoping safety splash doors, oil filtration to 1-micron, and precision oil chiller.

TRU TECH
Systems



Optional Overhead Probing accurately adjusts for variations in length and part orientation.

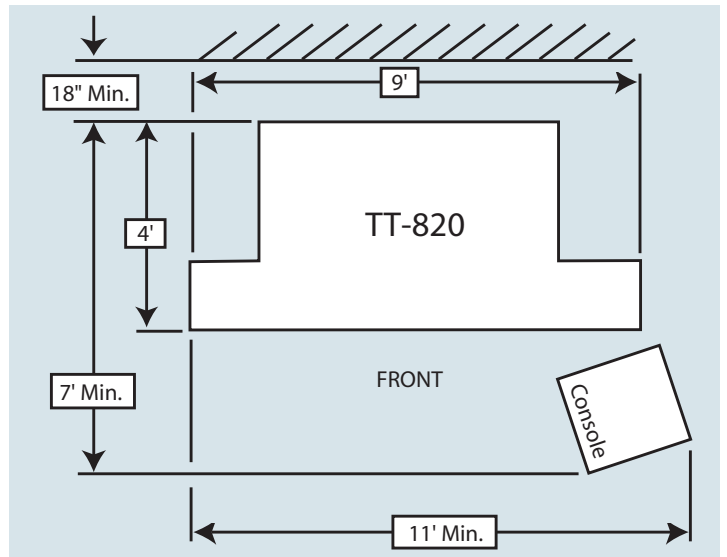


Optional 5 Micron filtration ensures maximum precision.



TT-820 SPECIFICATIONS

Maximum Grind Length (Distance Between Centers)		20"
Maximum Grind Diameter		8"
Maximum Travel	X Axis	20"
	Y Axis	8"
Standard Wheel Size		14" Max.
Wheel Speed		500-3000 RPM
Maximum Velocity	Y Axis	50"/Min.
	Z Axis	60"/Min.
Input Increment		.000010"
Accuracy		±.00010"
Repeatability		±.000050"
Wheel Spindle Motor		5 HP Variable
Workhead Motor HP 5C Taper		1/4 50-600 RPM
Workhead Angle Adjustment		±45 Degrees
Table Angle Adjustment		±8 Degrees
ID Spindle Motor		1/2 HP
Power Requirements	30 Amps	208-230V 60 Hz
Shipping Dimensions	Pallet #1	40"x48"x60"
	Pallet #2	91"x90"x65"
Shipping Weight		4500 LBS.



All photographs may include non-standard or optional features. For specific needs, please contact your local Tru Tech Systems distributor, or Tru Tech Systems, direct.

TRU TECH SYSTEMS, INC.

Toll Free: (877) TRU-TECH • Phone: 586 469-2700 • Fax: 586 469-1344
P.O. Box 46965 • Mt. Clemens, MI 48046 • www.trutechsystems.com